

## FOOD TECHNOLOGY FACT SHEET

Adding Value to Oklahoma

405-744-6071 • www.fapc.biz

# Steam Kettle Hookup

**Tim Bowser, P.E.**

Assistant Professor, Biosystems and Agricultural Engineering

**S**team-jacketed kettles (Figures 1 and 2) are often used to rapidly and uniformly heat food and agricultural products to processing temperatures. Steam is injected into a thin jacket that surrounds the bowl of the kettle (Figure 3). The steam condenses on the product-surface of the kettle jacket and transfers its latent heat of vaporization to the product. Condensed steam (condensate or water) is removed from the jacket of the kettle to allow more steam to enter and continue the heating process. The purpose of this fact sheet is to describe the hookup requirements for steam-jacketed kettles.



Figure 1.  
Tilting, siphon-drained kettle

### Steam Demand and Pressure

Most steam-jacketed kettles used in food and agricultural processes are operated in the range of five to 60 psig steam pressure. The temperature of steam at these pressures is 227 to 307° F. Typical steam usage for given kettle sizes and steam pressures is shown in Table 1 (Groen, 2000). Several assumptions are made as noted.

### Steam Traps

A steam trap is a mechanical device that automatically traps steam in an enclosed space and simultaneously allows condensate to be drained away. Many configurations of steam traps exist. The type of trap recommended depends on the kettle configuration. See Figure 2 to determine the type of kettle to be trapped. The two main types of kettles are fixed, gravity drained and tilting, siphon drained. The recommended trap for gravity-drained kettles is the inverted bucket style with a large vent. The large vent allows excess air to quickly escape. Alternate choices for the gravity-drained kettle are the float and thermostatic or thermostatic style traps. Siphon-drained tanks are preferably trapped with a differential condensate controller or an inverted bucket trap with a large vent. Steam traps should be sized approximately two-to-three times larger than the estimated condensate flow to allow for a safety factor.



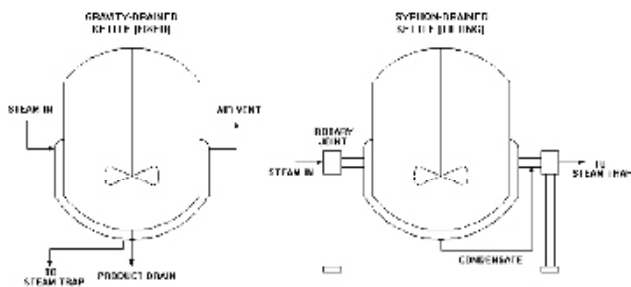
Figure 2.  
Tabletop, gravity-drained kettles

Table 1. Typical steam use for jacketed kettles.

Kettle Size, gallons	12 psig (244 °F)		20 psig (269 °F)		30 psig (271 °F)		45 psig (292 °F)	
	lbs/hr avg.	Heating time, min	lbs/hr avg.	Heating time, min	lbs/hr avg.	Heating time, min	lbs/hr avg.	Heating time, min
5	32	12.1	39	10	45	8.6	53	7.4
10	57	13.7	69	11.3	81	9.7	94	8.3
20	88	17.5	108	14.4	127	12.4	147	10.6
40	151	20.7	183	17.1	214	14.7	249	12.6
60	202	23.3	245	19.2	285	16.5	332	14.2
80	228	27.5	277	22.6	322	19.5	376	16.7
100	252	26.8	354	22.2	413	19.0	480	16.3

Assumptions: Initial product temperature of 60° F; final product temperature of 212° F; full kettle; product is water; 2/3 jacketed kettle; sea level.

Figure 3. Types of steam-jacketed kettles



- Never connect more than one kettle to the same trap to avoid short-circuits.
- Install unions and ball valves to facilitate installation and maintenance.
- Install filters and “dirt legs” to protect equipment from particles.
- Include one or more ball valves in the piping to facilitate system “blow-down” to a drain. A blow-down valve is often installed on a strainer.

### Safety

All installations should include a pressure relief valve at each pressure vessel (e.g. kettle jacket and boiler). The setting on the pressure relief valve should be equal to or preferably less than the labeled, maximum pressure rating for the vessel. Older equipment, or equipment with an unknown history, should be pressure tested with air or water before connecting steam to determine containment integrity. All steam lines and steam-heated equipment should be insulated or guarded to protect operators from burn injuries.

### Conclusion

A well-installed steam kettle system will provide many hours of trouble-free operation, improve product quality and increase process performance. When principles of steam heating are understood and applied, installation is a straightforward matter that requires making the best and safest use of available components.

### References

Armstrong International Inc., 2000. How to trap steam jacketed kettles (brochure), Stuart, FL.

Groen, Inc. (a division of Dover Industries), 2000. Steam jacketed kettles (brochure). Jackson, MS.

Spirax Sarco, Inc. 1986. Design of fluid systems; Hookups, 8<sup>th</sup> edition. Allentown, PA.

### Air Removal

Air is present in equipment and pipelines before steam is turned on. Air can continue to enter the system with steam and mix with it. Stagnant air-steam mixtures tend to settle out in time, with air dropping to the bottom of an enclosure. The presence of air will inhibit steam condensation and reduce the effectiveness of a kettle. Air vents must be installed to remove trapped air. Air vents on steam kettles should be located at a point farthest from the steam entry. Also, a steam trap with air venting capabilities is necessary. Each installation should be reviewed carefully to determine where pockets of air would tend to collect with regard to gravity, steam flow and equipment geometry.

### Condensate Return

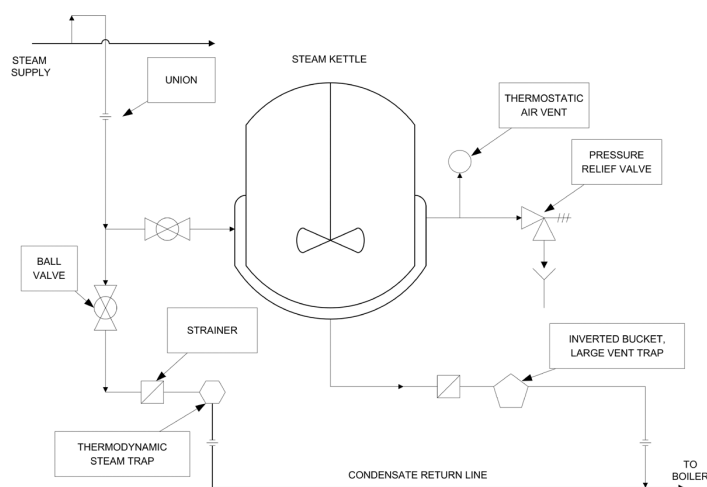
Heat transfer efficiency is improved if condensate is trapped and returned to the boiler as make-up water or used to preheat boiler make-up water. Other uses for condensate may be possible, depending upon the process requirements and the ingenuity of the designer. Many steam equipment suppliers sell packaged condensate return systems. These systems can be purchased and plumbed directly into a system. The choice of motive force used to return the condensate to the boiler is important. Electric pumps or steam power are common. In the case of electric pumps, electricity powers pumps that force condensate back to the boiler. For steam-powered units, boiler steam is used to drive the condensate back to the boiler. Steam powered pumps are often selected since fewer mechanical components are involved compared to electrically driven pumps. However, if steam is in short supply, or relatively expensive, steam pumping may not be the best choice.

### Hookup

A typical, fixed, gravity-drained kettle hookup is shown in Figure 4. A licensed, professional engineer with expertise in steam utilization can properly design and specify a system or check your design. Some steam equipment suppliers offer advice and diagrams for equipment hookup. An experienced steam fitter or plumber should be contracted for installation. Some hookup tips follow:

- The steam supply should be ample in size with the kettle inlet located high in the kettle jacket.
- Slot the steam inlet pipe at the kettle entrance to promote steam flow around the entire jacket area.
- Install traps close to the kettle.

Figure 4. Suggested kettle hookup for gravity-drained kettle



Oklahoma State University, in compliance with Title VI and VII of the Civil Rights Act of 1964, Executive Order 11246 as amended, Title IX of the Education Amendments of 1972, Americans with Disabilities Act of 1990, and other federal laws and regulations, does not discriminate on the basis of race, color, national origin, gender, age, religion, disability, or status as a veteran in any of its policies, practices or procedures. This includes but is not limited to admissions, employment, financial aid, and educational services.

Issued in furtherance of Cooperative Extension work, acts of May 8 and June 30, 1914, in cooperation with the U.S. Department of Agriculture, Robert E. Whitson, Director of Oklahoma Cooperative Extension Service, Oklahoma State University, Stillwater, Oklahoma. This publication is printed and issued by Oklahoma State University as authorized by the Vice President, Dean, and Director of the Division of Agricultural Sciences and Natural Resources and has been prepared and distributed at a cost of 74 cents per copy. 0710